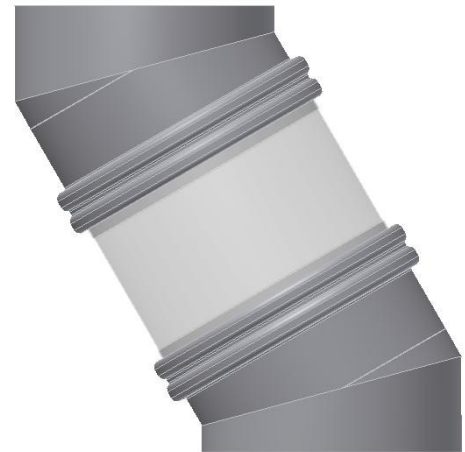


BFM® Guidelines - Offset Installations

Specific offset connectors are not available in a BFM® fitting. With an offset installation the product will be hitting and wearing one part of the connector during operation, which will generate heat and abrade the media, especially on crystallised products like sugar.



Our recommendation would be to manufacture the steel piping to account for the bends, or offset section of pipe to allow the BFM® fitting to be installed in a straight section.



BFM Global Ltd
PO Box 66-087
Beach Haven, Auckland 0749, New Zealand
Email: sales@BFMfitting.com
www.BFMfitting.com

 **BFM®**
fitting
"Keeping You Connected"