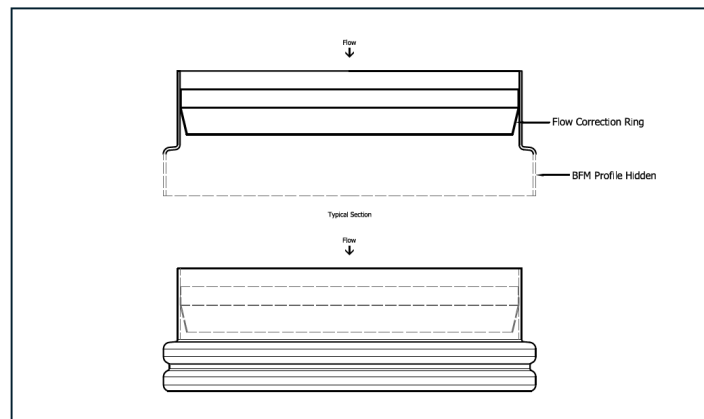


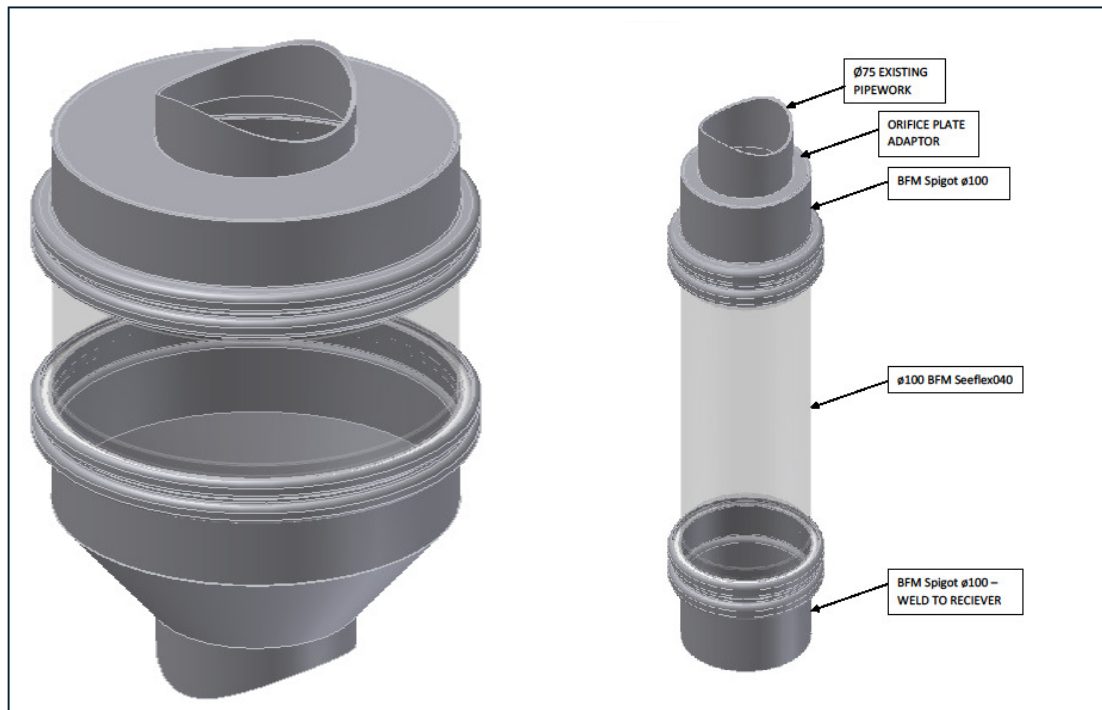
BFM[®] Guidelines - Flow Correction

Some powders can be hugely aggressive when flowing through the BFM[®] fitting. There are also many occasions where the powder is entering the BFM[®] fitting from an angle, causing abrasion to the wall of the BFM[®] fitting.

One solution to this problem is to insert a flow correction ring on the inside of the top BFM[®] spigot, which directs the powder inwards and away from the wall of the connector



Another option is to flange the pipe prior to the BFM[®] spigot. This will keep the product flow away from the connector walls.



BFM Global Ltd
PO Box 66-087
Beach Haven, Auckland 0749, New Zealand
Email: sales@BFMfitting.com
www.BFMfitting.com

 **BFM[®]**
fitting
"Keeping You Connected"