



HOME PAGE	HOW IT WORKS ▶	BROCHURES, PHOTOS & VIDEOS ▶	CONDITIONS OF USE	SAFETY	CASE STUDIES	FAQs	CONTACTS	DISTRIBUTOR LOGIN
-----------	----------------	------------------------------	-------------------	--------	--------------	------	----------	-------------------

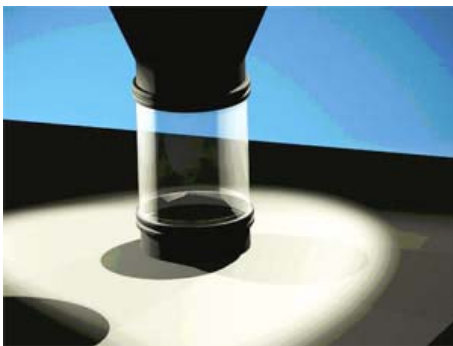
“Keeping You Connected”



## BFM® Spigots

### Patents and Registered Designs Applied For © 2006

The BFM® spigots are available in Stainless Steel T316, T304 and Mild Steel. They are available in a range of exact sizes, eliminating the imprecise nature of current connector widths and ensuring a perfect fit with the BFM® connector.

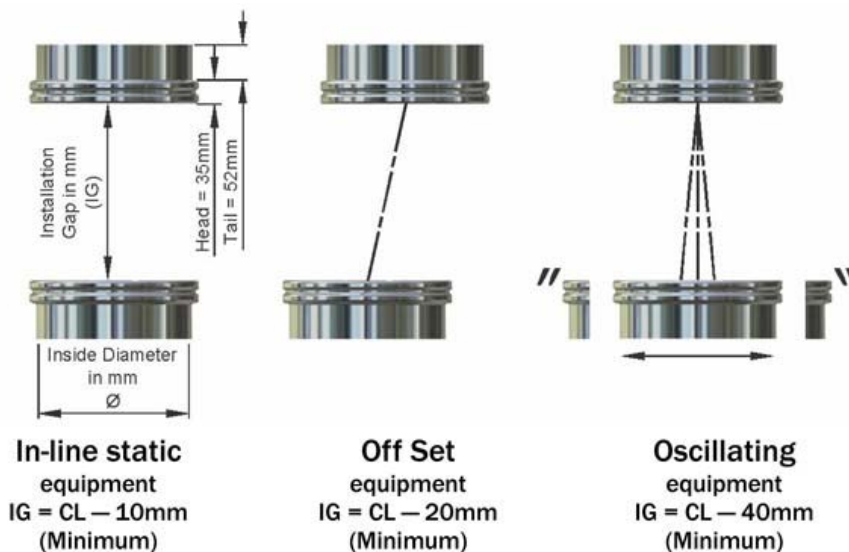


### A perfect fit, every time

When welding the BFM® fitting to your equipment the Application Length must be accurately measured.

Ø Diameter

- 100
- 125
- 150
- 200
- 250
- 300
- 350
- 400
- 450
- 500
- 550
- 600
- 650



CL = Connector Length  
 (See BFM® [Flexible Connector Sheet](#))

#### Notes:

- The stainless steel spigots (flanges) have a tail 52mm (2”) long. These can be easily cut down or cut on an angle to suit your existing pipework, see installation instructions for more information.
- It is important to weld the spigots onto your pipework with the length of the flexible connector in mind. Standard length flexible connectors will be stocked and hence will be more readily available, and less expensive than non standard lengths.
- For applications where there is a possibility for static build up, e.g. wood dust, flour, milk powder etc., we recommend using a static dissipative wire (strip), connecting the two BFM® spigots together.

---

BFM® fitting is a registered trademark of **BFM Global Ltd.**  
Design by Hanson Creative.